



NEWINGTON  
LONDON

3 Bedrooms

House - Mews

Located in London

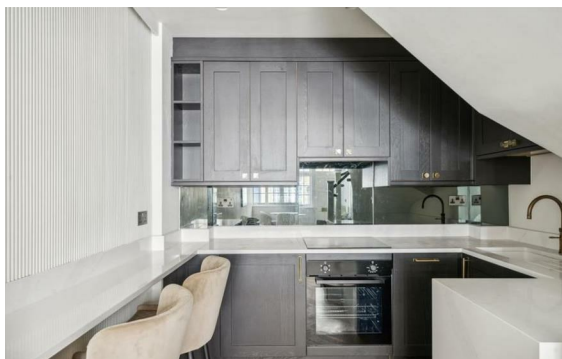
£1,275 Per Month



info@newingtonstates.com

<http://www.newingtonstates.com>

020 7724 2233



A beautiful newly-built and well-proportioned, three-bedroom mews house on this private street in Paddington. Developed as one of three houses this property has been meticulously finished and designed maximising the space and light in each room. In addition to this, the property benefits from free parking outside the house. Comprising of three bedrooms, two bathrooms, reception room and fully fitted kitchen.

Moments to Hyde Park this private mews is a few minutes stroll from Mayfair, Marylebone and Connaught Village. Exceptionally quiet cul-de-sac with the Front Line club around the corner, this is a hidden gem of a location.

EPC rating: C

## Energy Efficiency Rating: C

Agents Note: Whilst every care has been taken to prepare these particulars, they are for guidance purposes only. All measurements are approximate and are for general guidance purposes only and whilst every care has been taken to ensure their accuracy, they should not be relied upon and potential buyers/tenants are advised to recheck the measurements.

# NEWINGTON LONDON

60 Upper Montagu Street

London

W1H 1SN

020 7724 2233

[info@newingtonstates.com](mailto:info@newingtonstates.com)

<http://www.newingtonstates.com>